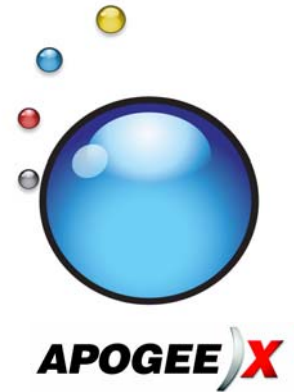


*How to print
from Front end
Applications*



ApogeeX

How to print from

- InDesign 2.x**
- InDesign CS**
- QuarkXPress 5.x**
- QuarkXPress 6.x**
- Illustrator CS**

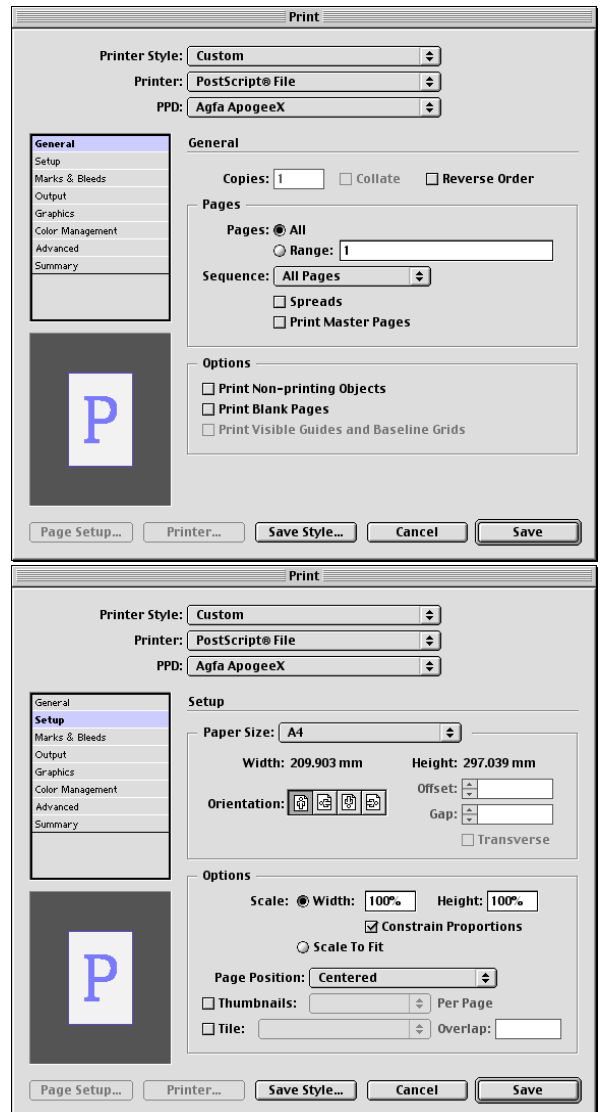
June 2004

Table of Contents

Table of Contents	2
1. How to print from InDesign 2.x	3
2. How to print from InDesign CS	6
3. How to print from QuarkXPress 5.x.....	8
4. How to print from QuarkXPress 6.x.....	11
5. How to print from Illustrator CS	14

1. How to print from InDesign 2.x

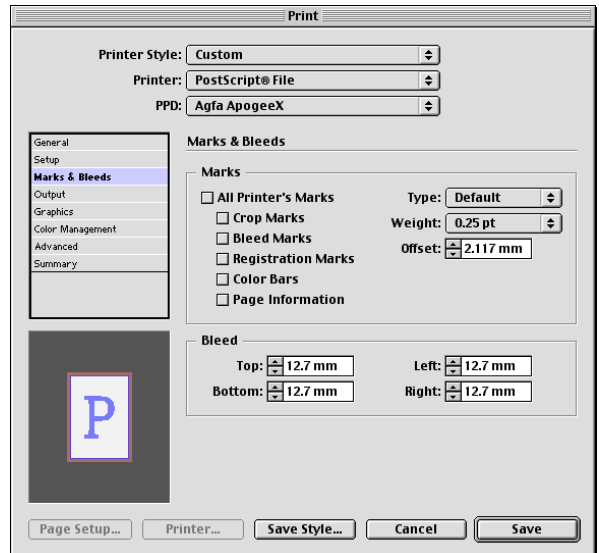
- From the *File* menu, select *Print...*
- In the *Printer* pull-down, select *PostScript®File*.
When choosing PostScript®File InDesign has complete control over DSC output because InDesign creates the PostScript and does not rely on the printer driver. For desktop publishing, use a supported PostScript printer driver. Read the *printing* chapter of the InDesign User Guide for more information.
- In the *PPD* pull-down select *Agfa ApogeeX* or the appropriate ApogeeX PPD.
- Enter the page range you want to output.
- Select *Setup*.
- Select the correct *Paper Size*.
- Set the appropriate *Orientation* and *Scale* value.
- In the *Page Position* pull-down, choose *Centered*.



- Select *Marks & Bleeds*.
- Fill in the *Bleed* amount if required.
Use *0 mm*.

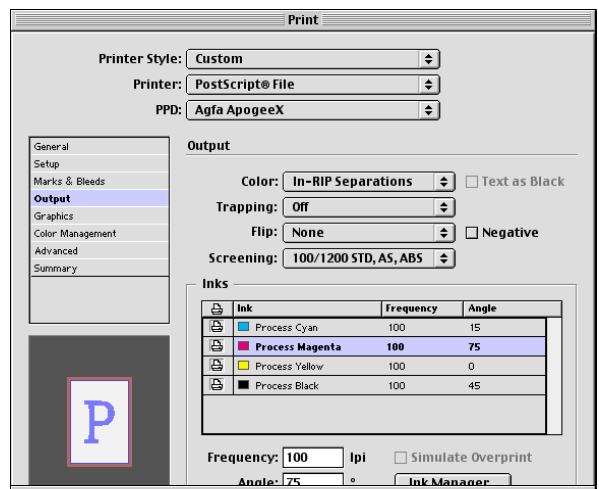
If you want to keep elements that are in the bleed area but outside the page dimension, set this value to the same as the Normalizer Settings. (If set to 0 mm, InDesign will strip out these elements to produce a smaller PostScript file.) If you don't have a Normalizer use the appropriate value.

(In this case we used the Normalizer default bleed size, 12.7 mm or 0.5")

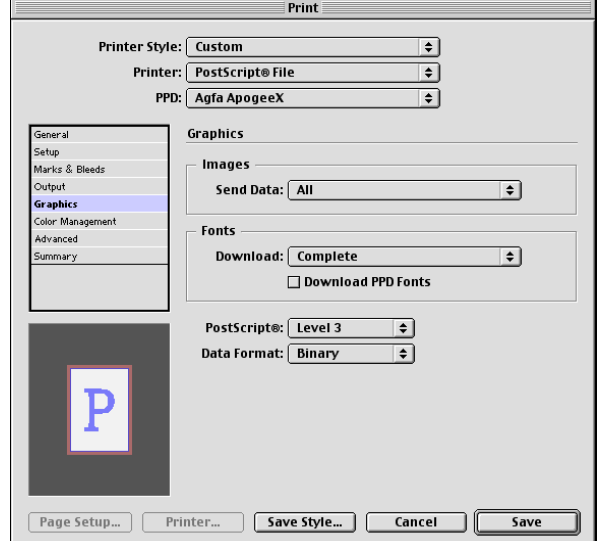


- Select *Output*.
- In the *Color* pull-down, select *In-RIP Separations*. If high resolution DCS images are used, select *Separations*.
- In the *Inks* section, you can convert colors to CMYK or remap spot colors.

Note:
In the *'Trapping'* pull-down, select *'Application Build-in'* or *'Adobe In-RIP'* if required.



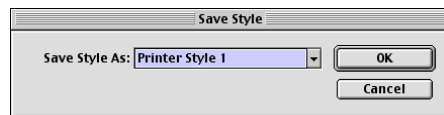
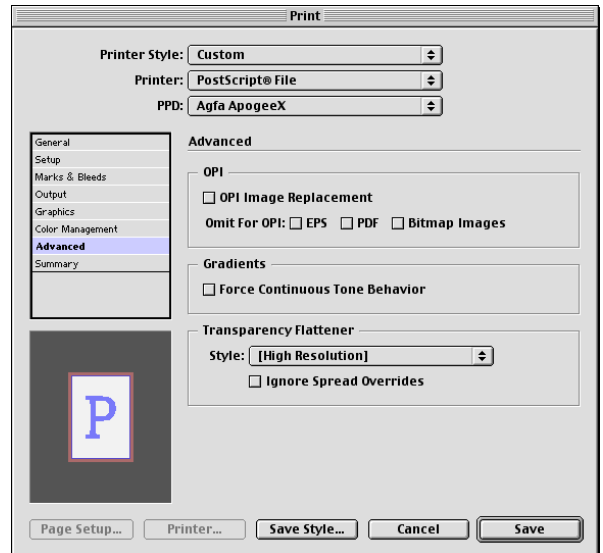
- Select *Graphics*.
- In the *Send Data* pull-down, select *All*.
- In the *Download* pull-down of the *Fonts* section, select *Complete*.
- In the *PostScript®* pull-down, select *Level 3*.
- In the *Data Format* pull-down, select *Binary*.



- Select *Advanced*.
- In the *Style* pull-down of the *Transparency Flattener* section, select *High Resolution*.

Note:
 Although the default 'High Resolution' style is perfectly suitable for the Normalizer, you may create your own style. Read the 'Working with transparency' chapter of the InDesign User Guide for more information.

- If you want to save the Printer Style click *Save Style...*, enter a Printer Style name and click *OK*.

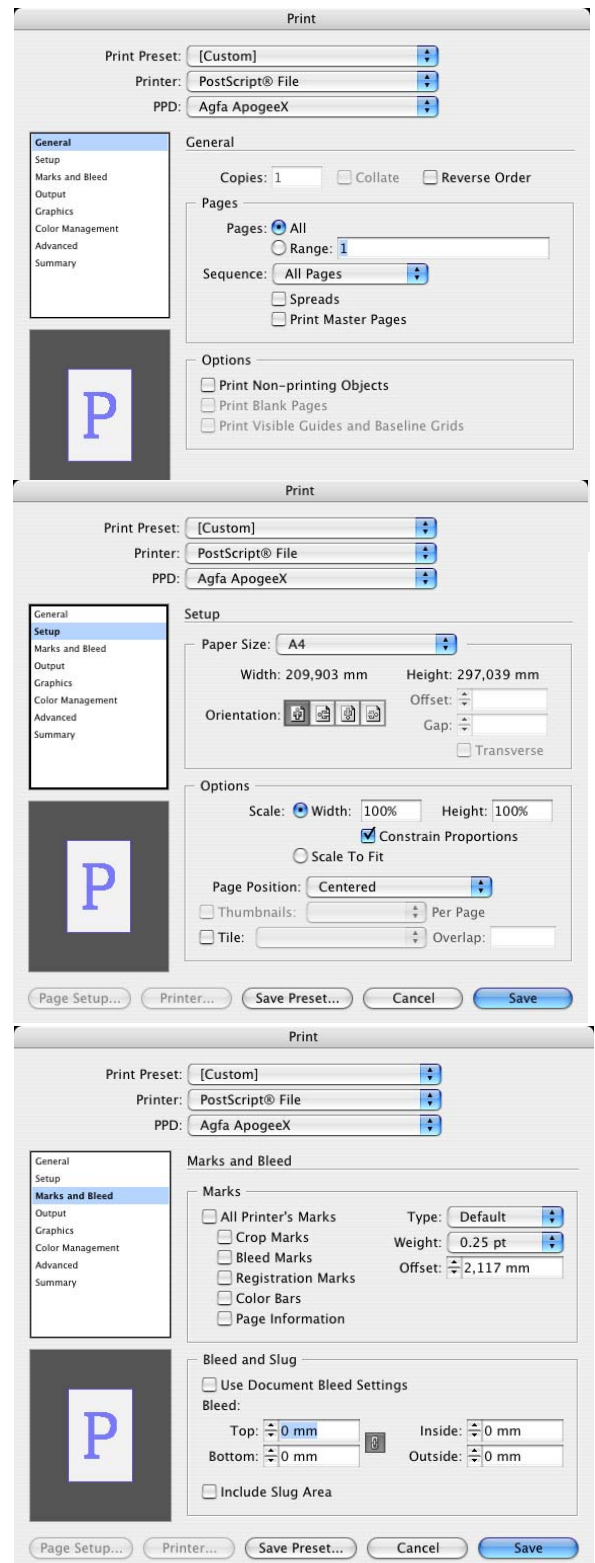


Read the *printing* chapter of the InDesign User Guide for more information about the use of Printer Styles.

- Click *Save* and select the appropriate Input Folder, enter a file name and click *Save*.

2. How to print from InDesign CS

- From the *File* menu, select *Print...*
- In the *Printer* pop-up, select *PostScript® File*.
When choosing PostScript® File InDesign has complete control over DSC output because InDesign creates the PostScript and does not rely on the printer driver. For desktop publishing, use a supported PostScript printer driver. Read the *Printing* chapter of the InDesign CS User Guide for more information.
- In the *PPD* pull-down select *Agfa ApogeeX* or the appropriate ApogeeX PPD.
- Select *Setup*.
- Select the correct *Paper Size*.
- Set the appropriate *Orientation* and *Scale* value.
- In the *Page Position* Pull-down, choose *Centered*.
- Select *Marks and Bleed*.
- Fill in the Bleed amount if required. Use 0 mm. If you want to keep elements that are in the bleed area but outside the page dimensions, set the value to the same value as in the Normalizer Settings. (If set to 0 mm, InDesign will strip out these elements to produce a smaller PostScript file.) If you don't have a Normalizer, use the appropriate value.



- Select *Output*.
- In the *Color* pop-up, select *In-RIP Separations*.
If High resolution DCS images are used, select *Separations*.
- In the *Screening* pop-up select the screen you'll use (If not available use a similar one).
- In the *Inks* section, you can convert colors to CMYK or remap spot colors.

Note:
In the 'Trapping' pop-up, select 'Application Built-In' or 'Adobe In-Rip' if required

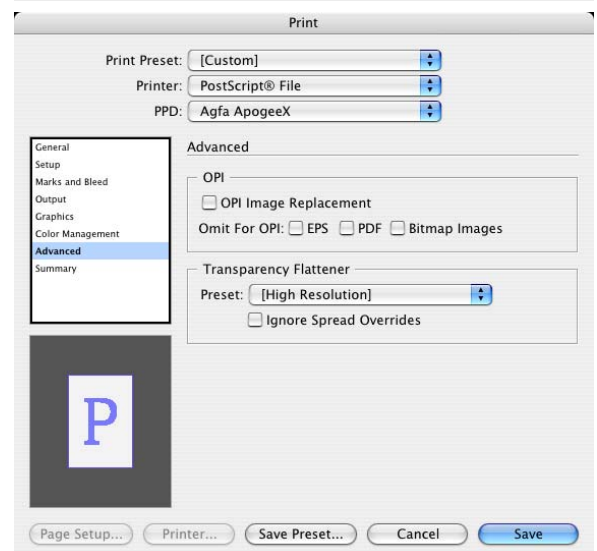
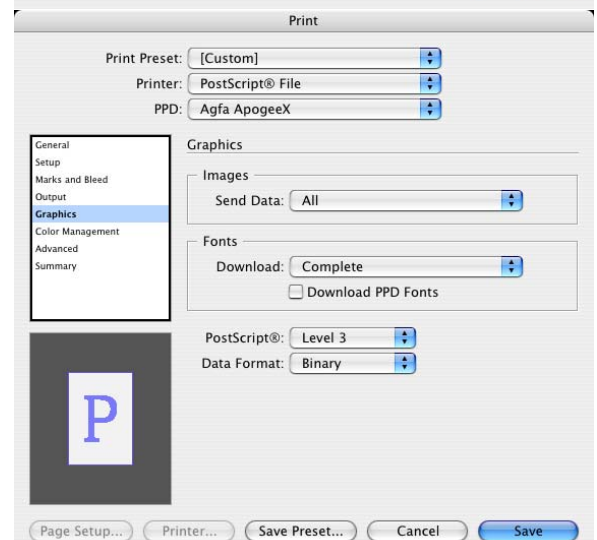
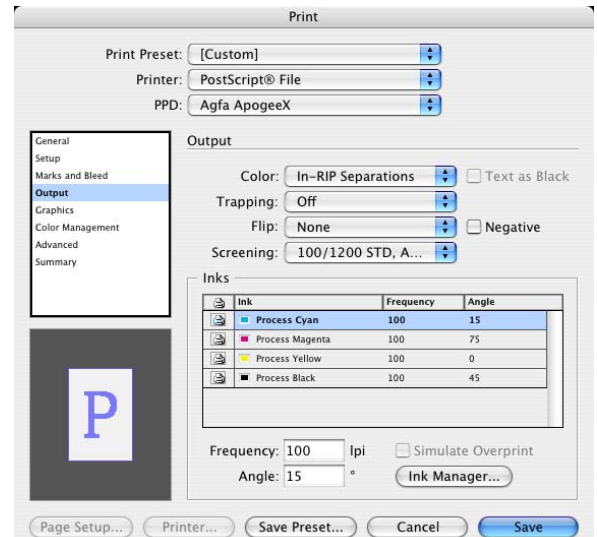
- Select *Graphics*.
- In the *Send data* pop-up, select *All*.
- In the *Download* pop-up of the *Fonts* section, select *Complete*.
- In the *PostScript®* pop-up, select *Level3*.
- In the *Data Format* pop-up, select *Binary*.

- Select *Advanced*.
- In the *Preset* pop-up of the Transparency Flattener section, select *High Resolution*.

Note:
Although the default 'High Resolution' style is perfectly suitable for the Normalizer, you may create your own style. Read 'Controlling flattening using transparency flattener presets' in the 'Using Transparency' chapter of the *InDesign CS User Guide* for more information.

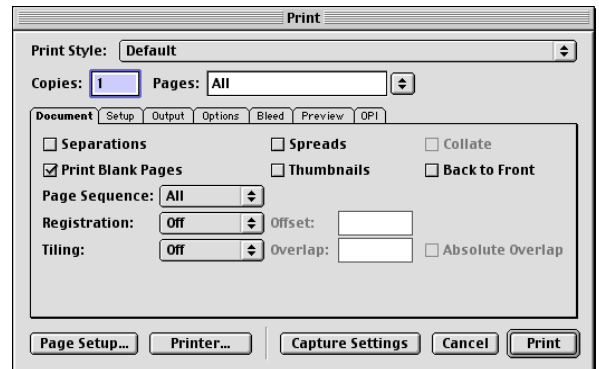
- Select *Save* or select *Save Preset...* if you want to save the Preset first.

Note:
Read the printing chapter of the *InDesign User guide* for more information about the use of printer presets.

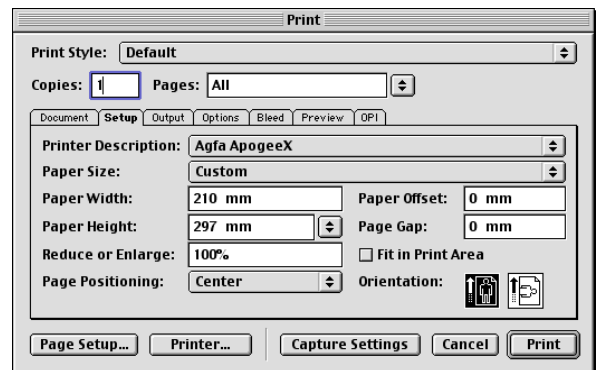


3. How to print from QuarkXPress 5.x

- Select *Print* from the *File* menu.
- Select the *Pages* you want to output.
- Select the *Document* tab.
- Turn *Separations Off* unless you are using DCS high resolution images, or if QuarkXPress trapping is required.
- Turn *Registration Off*.
- Select *Print Blank Pages* unless you don't want to include them.



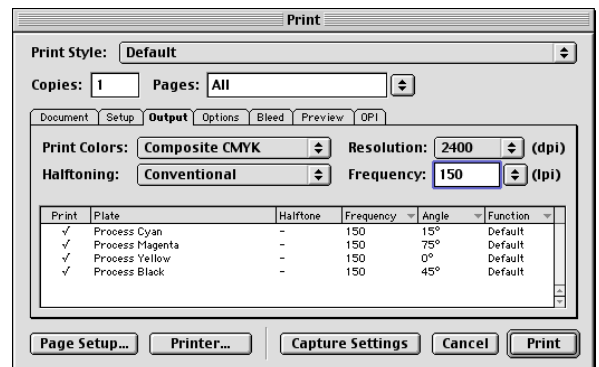
- Select the *Setup* Tab.
- In the *Printer Description* pull-down, select the *Agfa ApogeeX* PPD or the appropriate ApogeeX PPD.
Note:
If you do not see the ApogeeX PPD you want to use in the 'Printer Description' list, open 'PPD Manager...' from the 'Utilities' menu and ensure that your Apogee PPD is activated.



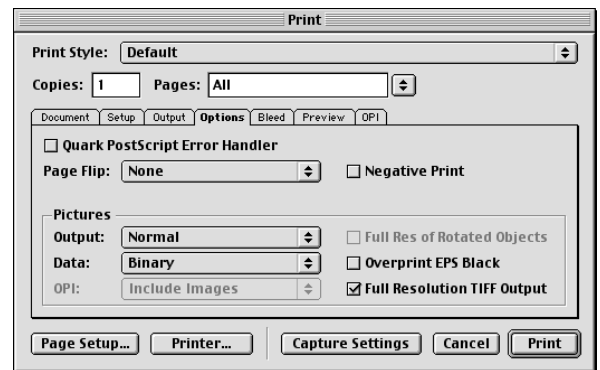
- In the *Paper Size* field, select *Custom* and fill in the correct *Paper Width* and *Paper Height*.
These values must be the same as set in the *Document Setup* window.
Note:
Always specify the 'Paper Height'; do not leave it to 'Automatic'.

- Verify the *Reduce or Enlarge* value.
- Select the Correct *Orientation*.
- Set the *Page Positioning* to *Center*.

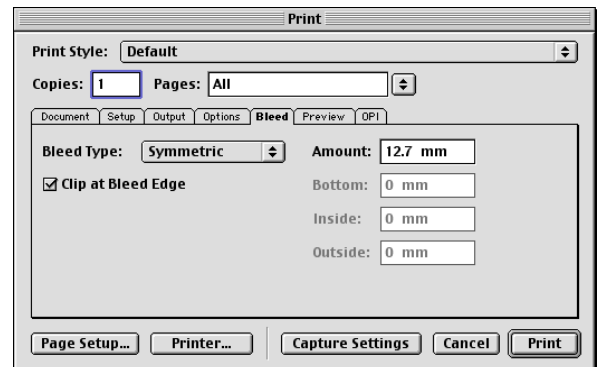
- Select the *Output* tab.
- Set the *Resolution*, *Halftoning* and *Frequency* fields to the correct values for final output.



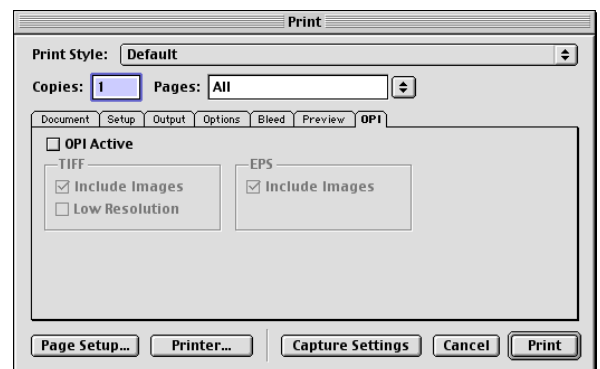
- Select the *Options* tab.
- Select *Full Resolution TIFF Output*.
- Set the *Output* field to *Normal* and the *Data* Field to *Binary*.



- Select the *Bleed* tab.
- Use *0 mm* and disable *Clip at Bleed Edge* or set this value to the same as the Normalizer settings and enable *Clip at Bleed Edge*.
(In this case we used the Normalizer default bleed size: 12,7mm or 0.5")

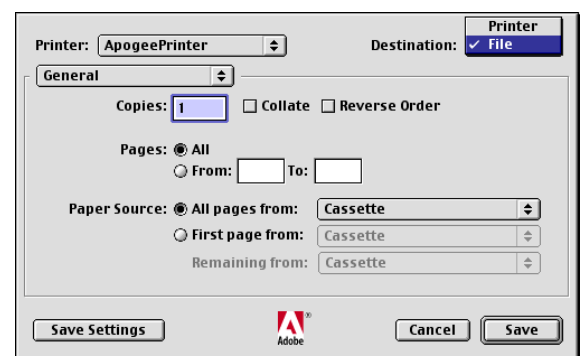


- Select the *OPI* tab
- Disable *OPI*, unless you intend to use OPI before ApogeeX.

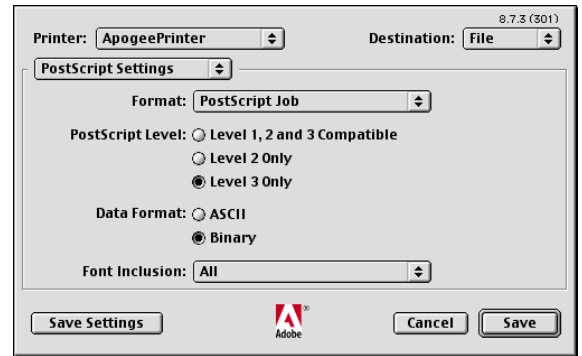


- Click the *Printer...* button at the bottom of the Print window.
- Select the *General* panel.
- In the *Printer* pull-down, the same printer as specified in the *Page Setup* window should be selected.
- In the *Destination* pull-down, select *File*. In this case we will print the document to a HotFolder input channel.

Note:
When printing to an AppleTalk, LPR, TCPIP or Named Pipe Input Channel, you should select 'Printer' from the 'Destination' pull-down.

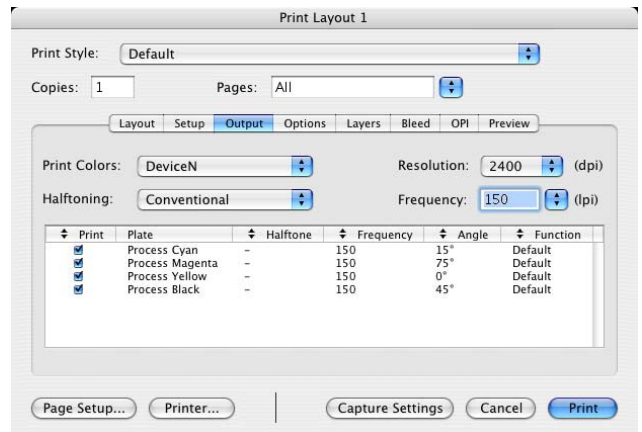
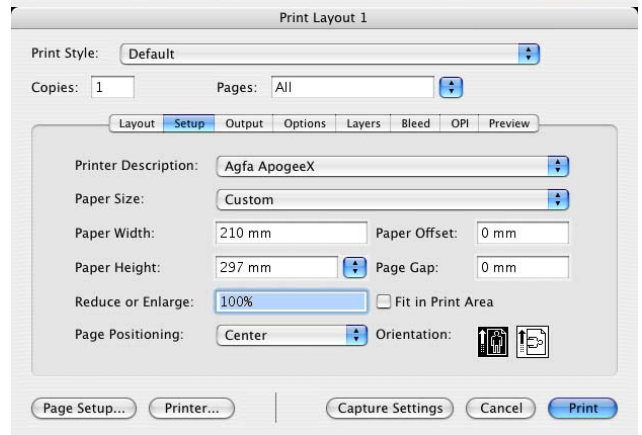
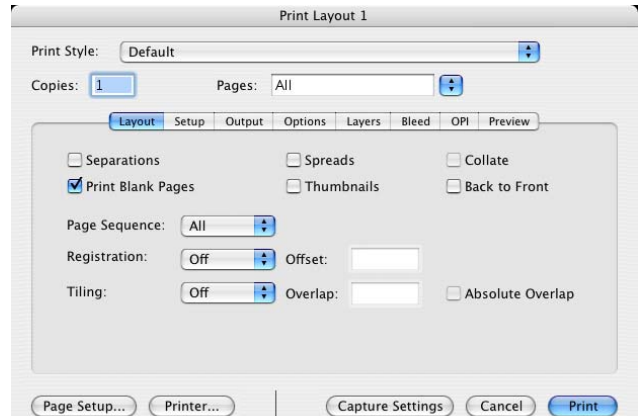


- Select the *PostScript Settings* Panel.
- In the *Format* field, select *PostScript Job*.
- In the *PostScript Level* field, select *Level 3 Only* (or *Levels 2 and 3* if you are using an Apple LaserWriter). Do not select *Level 1, 2 and 3 Compatible*.
- In the *Data Format* field, select *Binary* to decrease the PostScript file size.
- In the *Font Inclusion* field, select *All*.
- If you always use the same settings, click the *Save Settings* button.
- Click the *Save* button, select the desired HotFolder , enter a file name and click *Save*.
- Click the *Print* button in the *Print* window.



4. How to print from QuarkXPress 6.x

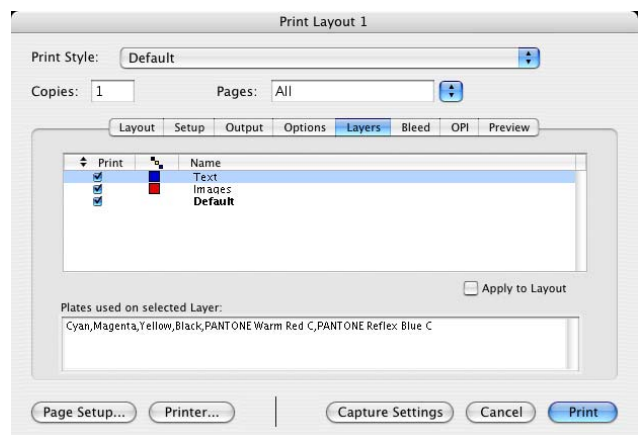
- From the *File* menu select *Print...*
- Select the *Pages* you want to output.
- Turn *Separations* off, unless High resolution DCS images are used or if QuarkXPress trapping is required.
Note:
With 'Separations' on, EPS images in RGB mode must be converted to CMYK mode before printing.
- Turn *Registration* off.
- Select *Print Blank Pages* unless you don't want to include them.
- Select the *Setup* tab.
- In the *Printer Description* pull-down, select the *Agfa ApogeeX* PPD or the appropriate ApogeeX PPD.
Note:
Follow the instructions at the end of this chapter if you don't see the ApogeeX PPD.
- In the *Paper Size* pop-up, select *Custom* and fill in the correct *Paper Width* and *Paper Height*.
- Leave the *Reduce or Enlarge* value to 100%.
- In the *Page Positioning* pop-up select *Center*.
- Select the *Output* tab.
- In the *Print Colors* pop-up, select *DeviceN*.
Note:
Selecting 'DeviceN' allows multiple inks and CTIFFs without the Agfa CTIFF XTension. This is the appropriate setting when printing spot colors.
Selecting 'Composite CMYK' will convert TIFF images to CMYK. This is the appropriate setting for CMYK output.
- Set the *Resolution*, *Halftoning* and *Frequency* for final output.



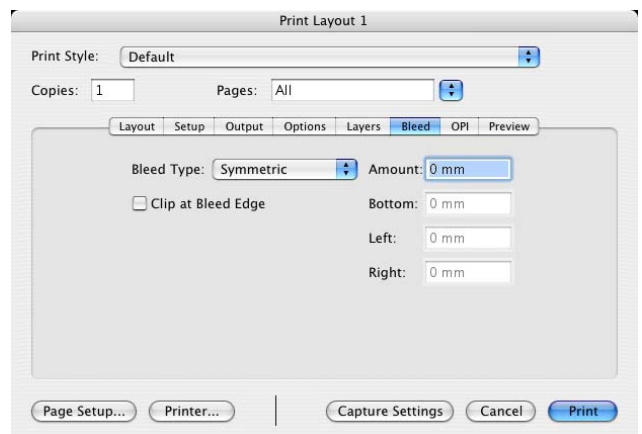
- Select the *Options* tab.
- Select *Quark PostScript Error Handler*.
- In the *Pictures* section select *Normal* in the *Output* pop-up, *Binary* in the *Data* pop-up and enable *Full resolution TIFF output*.
Note:
 If a print job flushes without printing, the 'Binary' format may be causing an error; when this occurs, try choosing 'Clean 8-bit' or 'ASCII' instead.



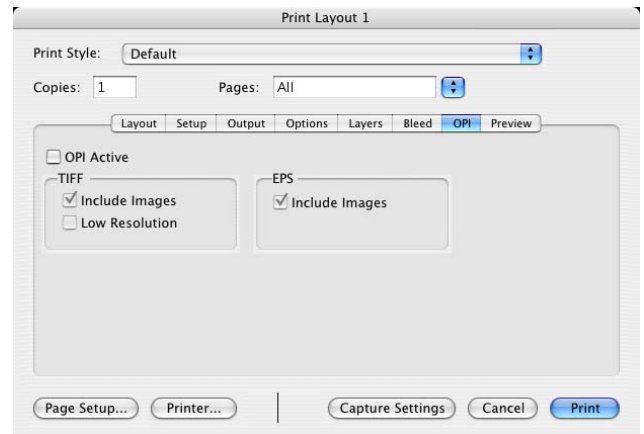
- Select the *Layers* tab.
- Suppress output for layers you don't want to print.
Note:
 If you have hidden a layer (and thus suppressed it), checking the *Print* column causes the Layer's items to print.
 If you have suppressed output for an individual item, it will never print, regardless of whether or not it's layer is suppressed.



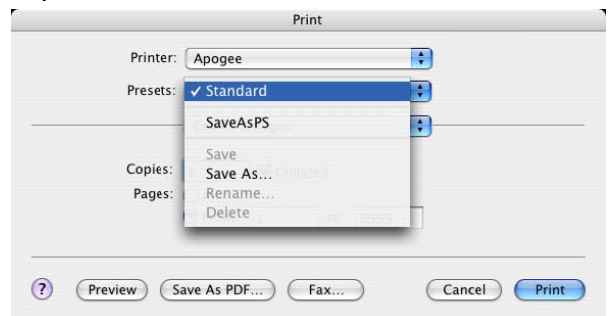
- Select *Bleed* tab.
- Use 0mm and disable *Clip at Bleed Edge* or set this value to the same as the Normalizer settings and enable *Clip at Bleed Edge*.



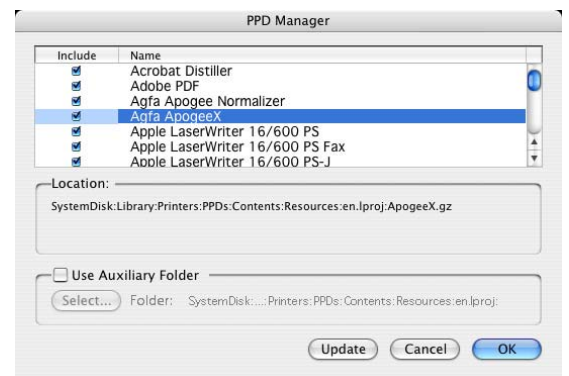
- Select the OPI tab.
- Disable *OPI Active*, unless you intend to use OPI before ApogeeX.



- If you want to print directly to an ApogeeX AppleTalk, LPR, TCPIP or NamedPipe channel click *Print...*
- If you're not sure whether the right printer is selected or if you want to save the PS file, click *Printer...* instead and continue with the following procedure.
In the *Printer* pop-up select your printer, in the *Presets* pop-up select *SaveAsPS* to save the PostScript file to disk. Click *Print...* or *Save...* and *Print...* in the next window.

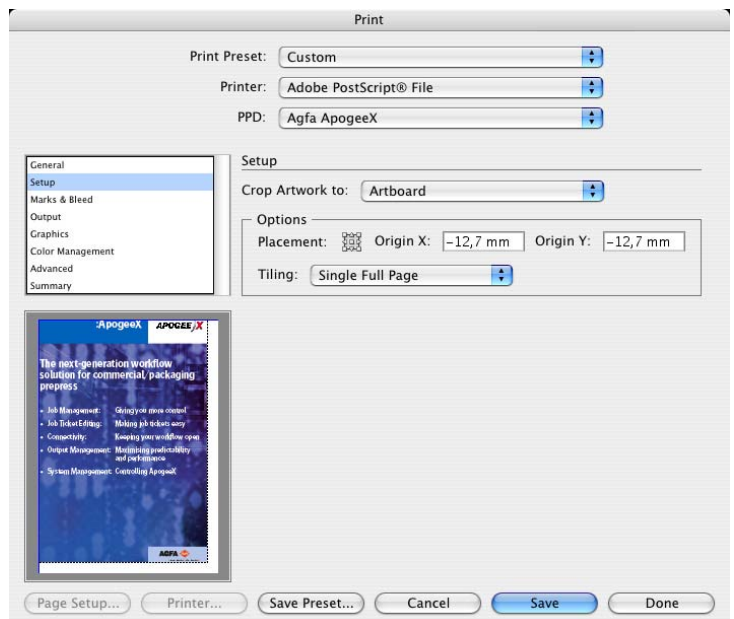
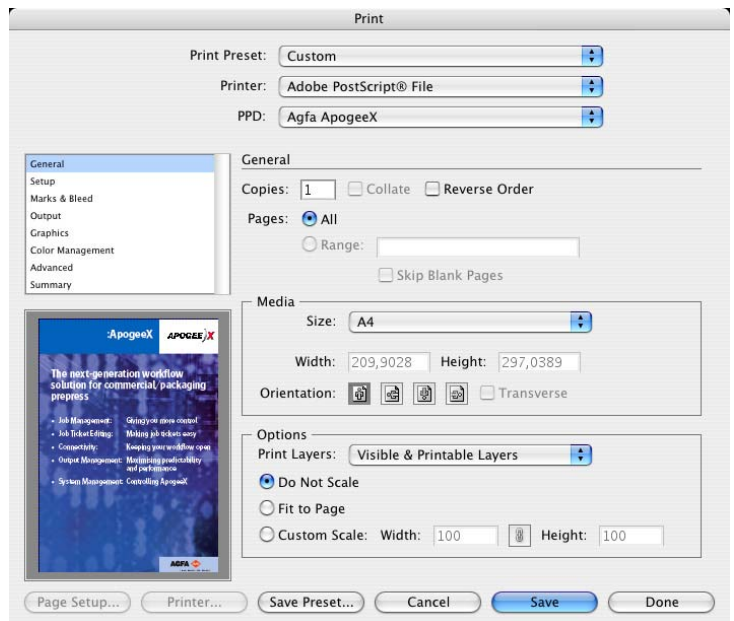


- If the *ApogeeX PPD* was not available in the *Printer Description* pop-up of the *Setup* tab, open *PPD Manager...* in the *Utilities* menu and ensure that your Agfa ApogeeX PPD is activated.

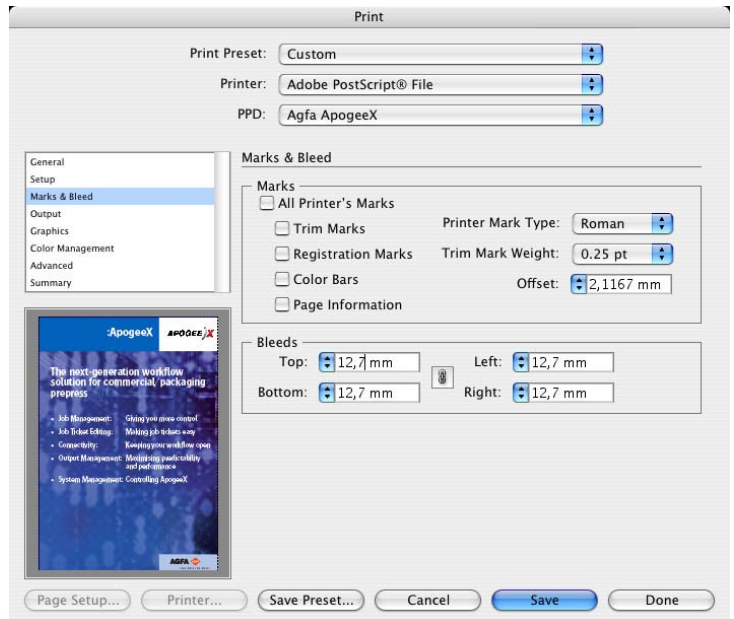


5. How to print from Illustrator CS

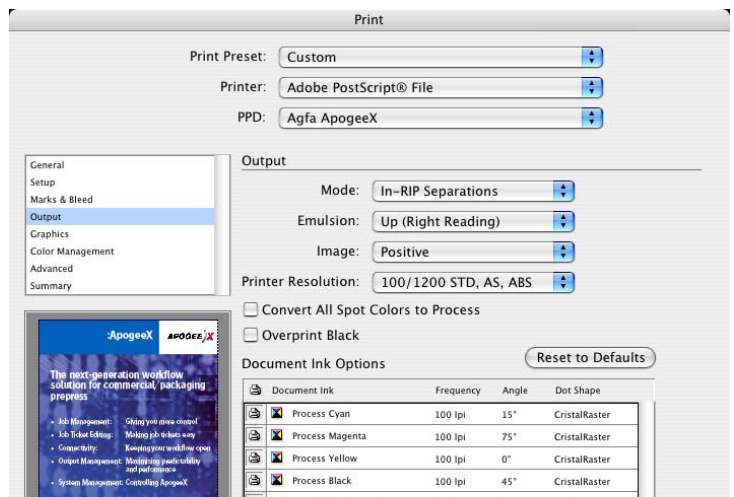
- From the *File* menu select *Print...*
- In the *Printer* pop-up, select *Adobe PostScript® File*. When choosing Adobe PostScript® File Illustrator has complete control over DSC output because Illustrator creates the PostScript and does not rely on the printer driver. For desktop publishing, use a supported PostScript printer driver. Read the *Printing Artwork* chapter of the Illustrator CS User Guide for more information.
- In the *PPD* pull-down select *Agfa ApogeeX* or the appropriate ApogeeX PPD.
- In the *Media* section, select the correct *Paper Size* and appropriate *Orientation*.
- In the *Options* section choose *Do not Scale*.
- Select *Setup*. Choose 0 for *Origin X* and *Origin Y* unless bleed is needed. If bleed is needed fill in the appropriate negative bleed value. In this case we used the Normalizer default bleed size, -12,7mm or 0.5”.



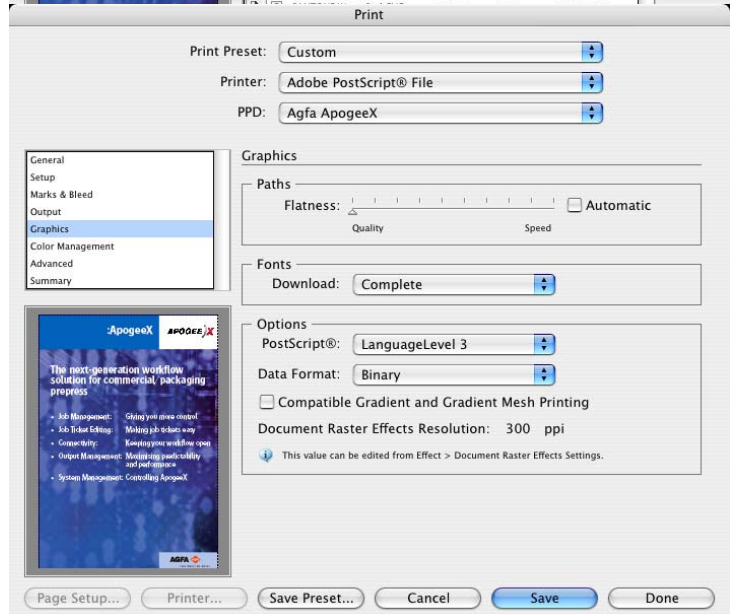
- Select *Marks & Bleed*.
- If no bleed is needed, enter 0 for all values in the *Bleeds* section. If bleed is needed, enter the same value as used in the previous window for Top, Bottom, Left and Right.



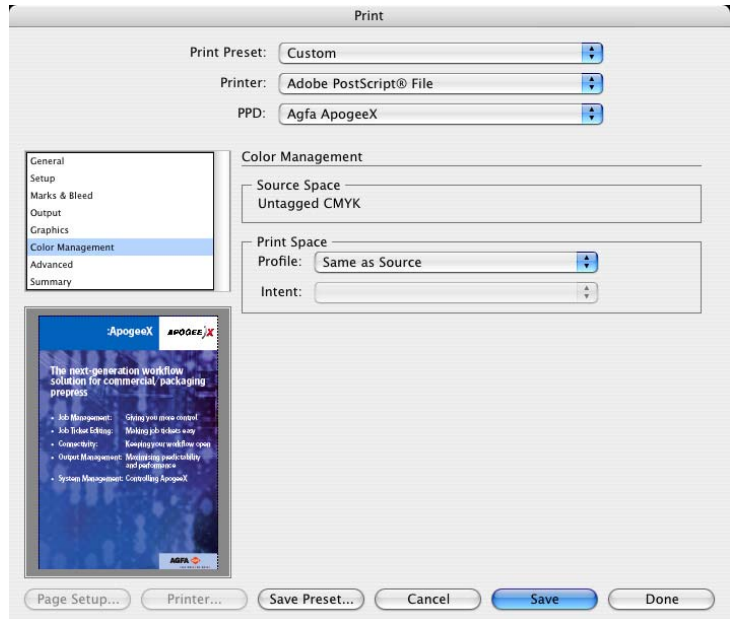
- Select *Output*.
- In the *Mode* pop-up, select *In-RIP Separations*. If High resolution DCS images are used, select *Separations (Host-Based)*.
- In the *Printer Resolution* pop-up select the screen you'll use (If not available use a similar one).
- In the *Document Ink Options* section, you can convert colors to CMYK or remap spot colors.



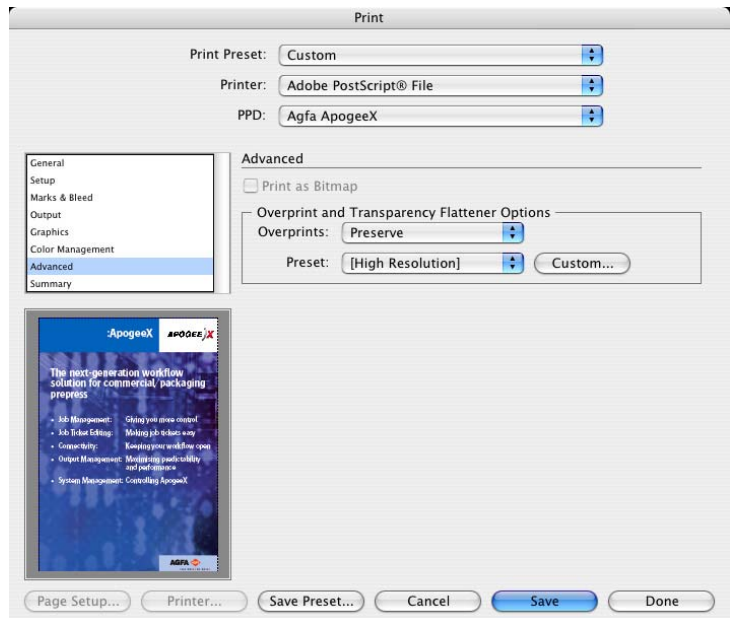
- Select *Graphics*.
- In the *Flatness* slide-bar of the *Paths* section, choose *Quality*.
- In the *Download* pop-up of the *Fonts* section, select *Complete*.
- In the *Options* section, select *LanguageLevel 3* in the *PostScript®* pop-up and *Binary* in the *Data Format* pop-up.



- Select *Color Management*.
- In the *Profile* pop-up of the *Print Space* section, select *Same as Source*.



- Select *Advanced*.
 - In the *Overprint* pop-up select *Preserve*.
 - In the *Preset* pop-up select *[High Resolution]*.
- Note:*
Although the default '[High Resolution]' style is perfectly suitable for the Normalizer, you may create your own style. Read 'Setting advanced printing options' in the 'Printing Artwork' chapter of the Illustrator CS User Guide for more information.



- Select *Save* or select *Save Preset...* if you want to save the Preset first.
- Note:*
Read 'Using print presets' in the 'Printing Artwork' chapter of the Illustrator CS User guide for more information about the use of printer presets.